

Technowrap™ Engineered Composite Repairs

DRS Deck Repair - Gulf of Mexico

Date

2019

Client

Global Supermajor Operator

Location

Gulf Of Mexico

Scope

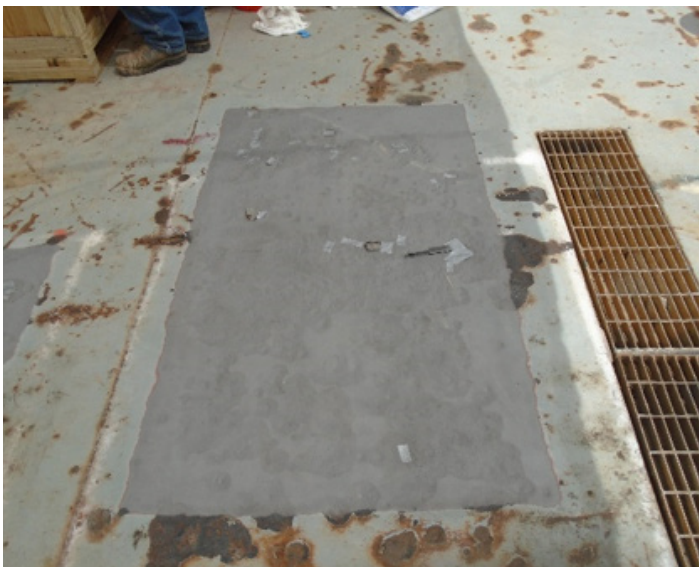
It was advised that a logging support deck plate onboard a supermajors platform was suffering from external corrosion and various through-wall defects. Four areas of the logging plate deck required composite repairs.

Solution

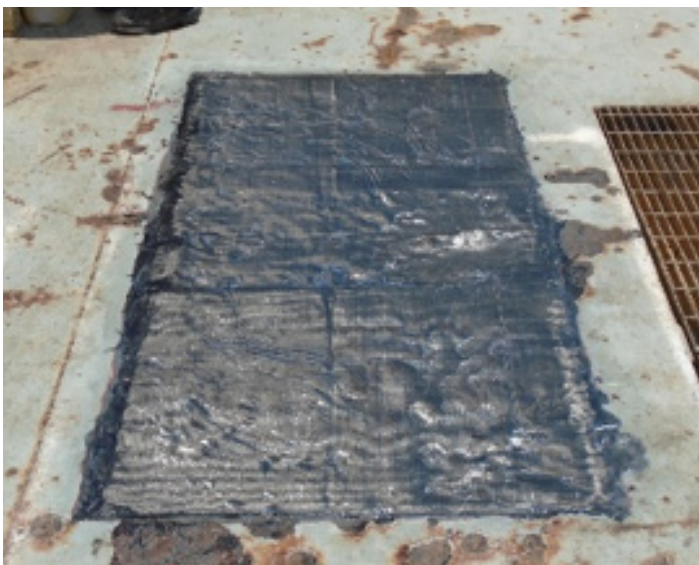
Following an engineering assessment, ICR proposed four layers of Technowrap™ Structural carbon fibre combined with our DRS resin system to be applied over the defect areas. The design challenge for the repair was to ensure enough strength within the repair to withstand the applied load, but also impact tolerance from dropped objects. A design methodology using rubber toughened epoxy has been developed by ICR ensuring both strength and stiffness as well as impact tolerance.

Results & Benefits

- The application of the Technowrap™ DRS went as planned and without delays
- The integrity of the deck was restored for a 20-year defined lifetime



Defect Area - Before Repair



Defect Area - After Repair



Defect Area - Before Repair



Defect Area - After Repair